

## Distribution boards DIDO ACT

ACT distribution boards can be used in applications with wall mounted electrical installations, like containers, wooden houses. Blended cuttings on top and bottom of enclosure for entrance of various dimensions of installation channel.

Enclosures are completely assembled with all necessary parts, such as:

- DIN rail
- Insulated terminals, neutral and ground
- Covers for free space
- Needed installation accessories
- Instruction manual



### Surface mounted distribution board - plastic door - transparent

Type	Code No.	Number of modules	Weight [g]	Packaging [pcs]	Rows
ACT12PT	001100240	12+2	1300	5	1
ACT24PT	001100241	24+4	1700	5	2
ACT36PT	001100242	36+6	2100	5	3

### Surface mounted distribution board - plastic door - white

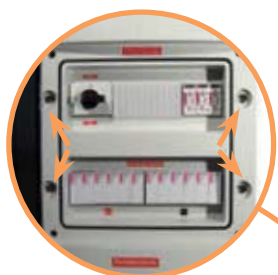
Type	Code No.	Number of modules	Weight [g]	Packaging [pcs]	Rows
ACT12PO	001100243	12+2	1300	5	1
ACT24PO	001100244	24+4	1700	5	2
ACT36PO	001100245	36+6	2100	5	3

## Modular distribution board for use outside DIDO-ECH

Rated current  
**63 A**

Rated voltage  
**400 V**

Degree of protection  
**IP 65**



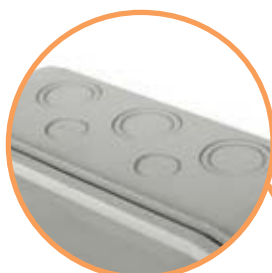
→ Left or right door opening



- Standard set includes:
- metal DIN rail TH35
  - PE/N terminals
  - mounting set with screws
  - marking stickers with symbols
  - covers for mounting holes
  - cover for empty modular spaces



→ Possible to seal enclosure, to prevent unauthorized access.



→ Prepared points for glands (cable entry)



→ Tight closing with rubber between door and housing provide IP65. Also possible to install key lock

## Distribution boards

Watertight wall-mounted distribution boards apply in domestic and industry architecture for mounting modular equipment for protection (IP65) against wet, dust and another dirtiness. Enclosure is made of high thermal stability material - ASA (Acrylonitrile-Acrylic-Styrene), plastic with good dielectrical and mechanical attributes, UV resistant (colour stability). Easy and quick montage.

## Main elements:

Bottom cover with DIN rail, PE and N bars and holes for PG cable inlets properly marked

Top cover with seal of the door

Transparent door made of polycarbonate (PC) with plastic lock (in standard) or metal lock with key (in option)

## Wall mounted distribution board - ECH

Type	Code No.	Number of modules	Weight [g]	Packaging [pcs]	Rows
ECH-4G	001101060	4	460	1/5	1
ECH-8G	001101061	8	680	1/5	1
ECH-12PT	001101062	12	1240	1/5	1
ECH-24PT	001101063	24	1700	1/5	2
ECH-36PT	001101064	36	2310	1/5	3

Enclosure designation

Type →

**ECH...G**

**...PT**

Modules (4, 8, 12, 24, 36)

Vertical door opening  
(4 or 8 modules)  
Horizontal door opening  
(12, 24 or 36 modules)



ECH-4G



ECH-8G



ECH-12PT



ECH-36PT

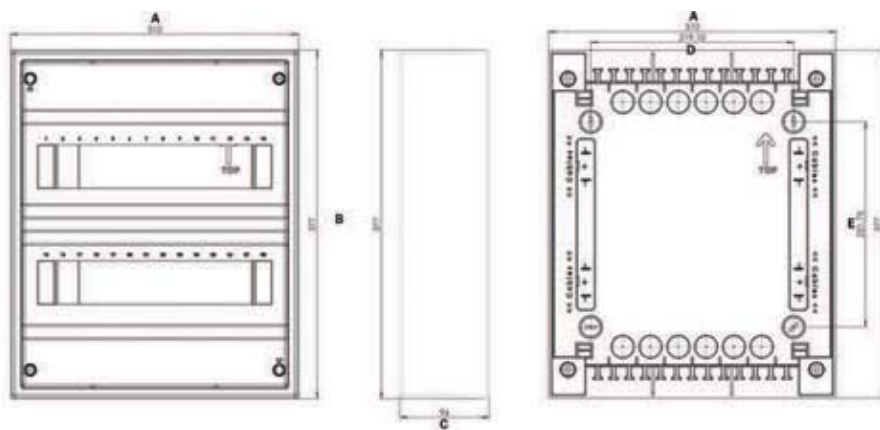
## Accessories

Type	Description	Code No.	Weight [g]	Packaging [pcs]
ECH-L2K	Metal lock with 2 keys	001100204	50	1
PST-UNI	2x15 add-on terminal	001101051	100	1/25
MP-ECH	Modular cover - grey (12modules)	001101053	26	10/500

\* PST-UNI is and extra insulating terminal (2 x 15) that can be mounted into 12, 24 and 36 module distribution boards



## Dimensions



	A [mm]	B [mm]	C [mm]	D [mm]	E [mm]	Max. allowed power losses when Max. number of devices are installed
ACT12	310	251	96	96	219	30W
ACT24	310	377	96	219	222	40W
ACT36	310	502	96	219	347	60W

## Modular distribution board for use outside DIDO-ECH

## Technical data

Degree of protection	IP 65
Insulation class	II
Colour	RAL 7035
Double insulation	
Standard	IEC 60670-1, IEC 60670-24
Installation temperature	-20° / +60°C
Glow wire test	650°C

## Number of PE - N terminals:

4-G	2x4	4 PE / 4 N
8-G	2x8	8 PE / 10 N
12-PT	2x10	10 PE / 10 N
24-PT	2x15	15 PE / 15 N
36-PT	2x15	15 PE / 15 N

## Dimensions

type	Dimensions						Max. allowed power losses when Max. number of devices are installed
	A	B	C	D	E	F	Pde
ECH-4G	201 mm	128 mm	120 mm	-	78 mm	111 mm	10W
ECH-8G	201 mm	202 mm	120 mm	-	100 mm	140 mm	13W
ECH-12PT	259 mm	319 mm	144 mm	-	210 mm	130 mm	16W
ECH-24PT	384 mm	319 mm	144 mm	125 mm	210 mm	255 mm	24W
ECH-36PT	508 mm	319 mm	144 mm	125 mm	210 mm	380 mm	26W

